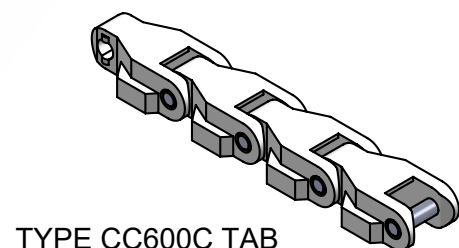
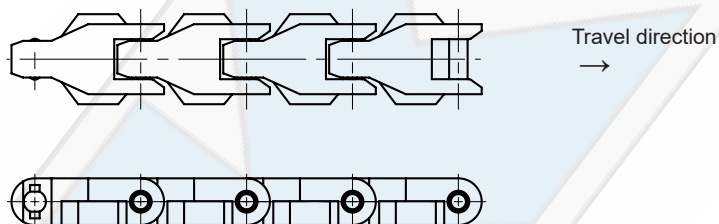
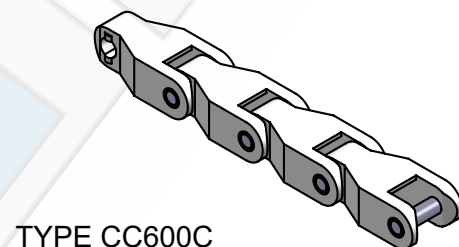
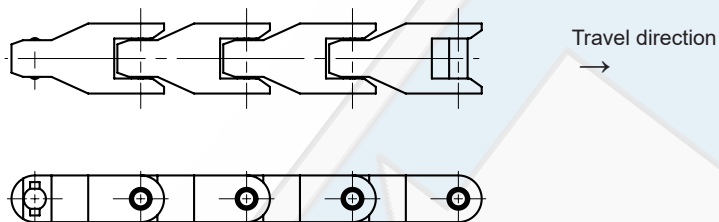
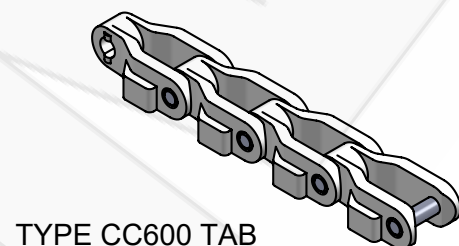
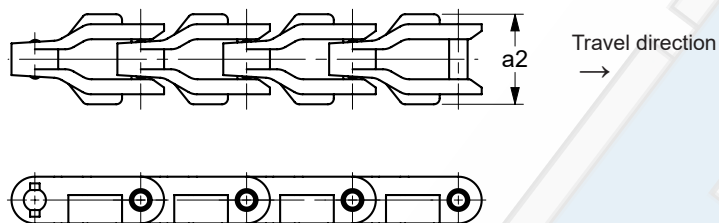
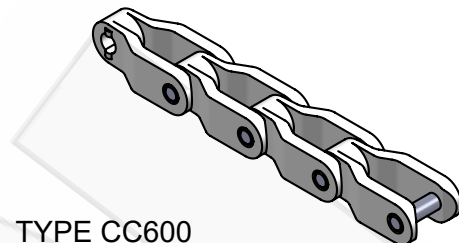
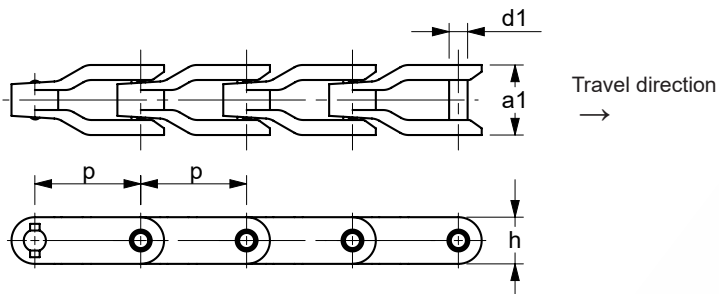


**KRATTENBAANKETTINGEN
CASE CONVEYOR CHAINS
KASTENTRANSPORTKETTEN
CHAÎNES CONVOYAGE DE CAISSES**

Werksnorm
Works' standard



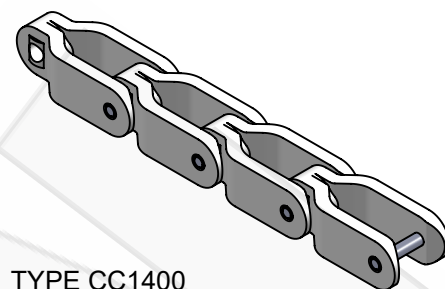
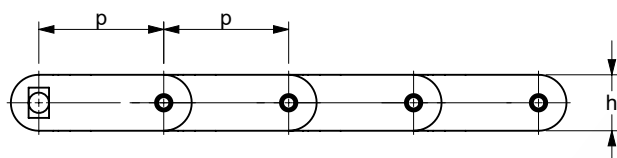
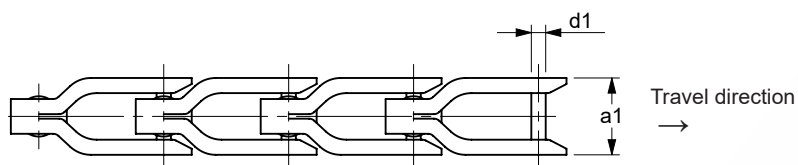
K.T.N. Number	p [mm]	d1 max. [mm]	h [mm]	a1 [mm]	a2 [mm]	Side-bending radius min. [mm]	Permissible tensile strength [kN]	q [kg/m]	Material
05/CC600/KE*	63,50	11,00	28,40	42,00	-	600	6	1,30	Polyacetal
05/CC600/KE/TAB*	63,50	11,00	28,40	42,00	54,00	600	6	1,40	Polyacetal
05/CC600C/KE	63,50	11,00	28,40	42,00	-	600	6	1,40	Polyacetal
05/CC600C/KE/TAB	63,50	11,00	28,40	42,00	54,00	600	6	1,50	Polyacetal

* Uitvoering beschikbaar in gietijzer

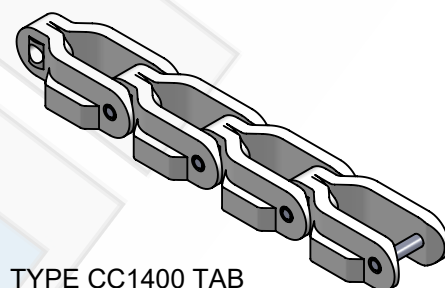
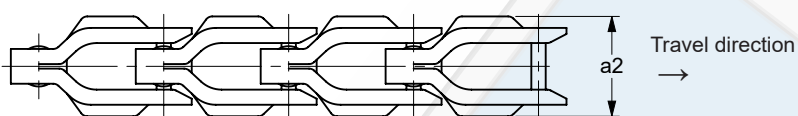
* Execution possible in material cast iron

**KRATTENBAANKETTINGEN
CASE CONVEYOR CHAINS
KASTENTRANSPORTKETTEN
CHAÎNES CONVOYAGE DE CAISSES**

Werksnorm
Works' standard



TYPE CC1400



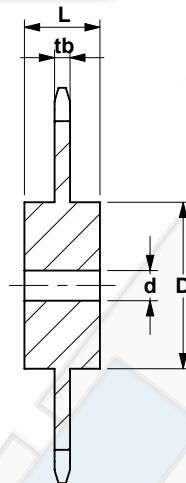
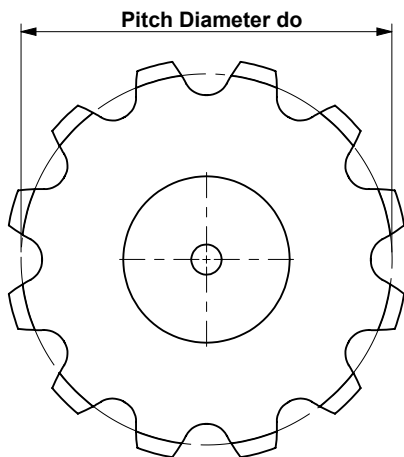
TYPE CC1400 TAB

5

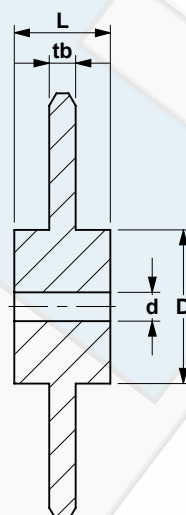
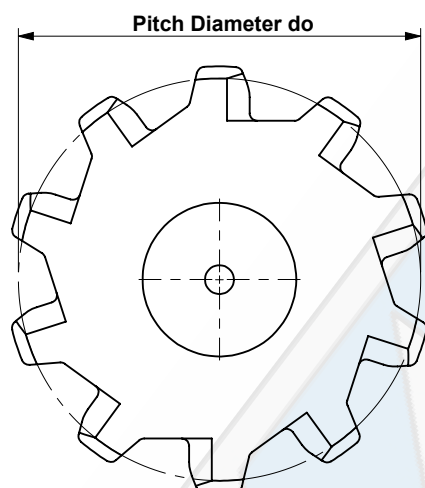
K.T.N. Number	p [mm]	d1 max. [mm]	h [mm]	a1 [mm]	a2 [mm]	Side-bending radius min. [mm]	Permissible tensile strength [kN]	q [kg/m]	Material
05/CC1400/KE	82,50	11,00	38,00	50,00	-	450	8	2,10	Polyacetal
05/CC1400/KE/TAB	82,50	11,00	38,00	50,00	66,00	450	8	2,30	Polyacetal

**KRATTENBAAN KETTINGWIELEN
CASE CONVEYOR CHAIN SPROCKETS
KASTENTRANSPORT KETTENRÄDER
PIGNONS DE CONVOYAGE CAISSES**

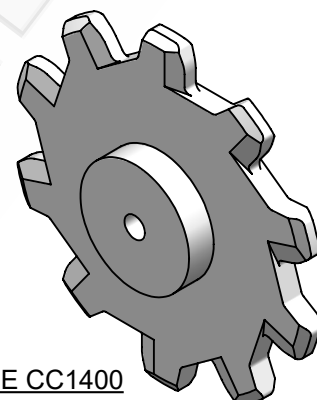
Werksnorm
Works' standard



TYPE CC600



TYPE CC1400



5

K.T.N. Number	z	do	d min.	D	L	tb
	[mm]	[mm]	[mm]	[mm]	[mm]	[mm]
24CC600006	6	127,00	20	63,00	42,30	11,00
24CC600008	8	165,90	20	73,50	42,30	11,00
24CC600010	10	205,50	20	73,50	42,30	11,00
24CC600012	11	225,40	20	73,50	42,30	11,00
24CC140006	6	164,50	20	63,00	42,30	15,00
24CC140008	8	215,20	20	75,00	42,30	15,00
24CC140010	10	266,70	20	75,00	42,30	15,00

Overige tandtallen op aanvraag
Other number of teeth on request

Materialen op aanvraag
Materials on request