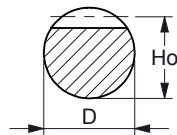
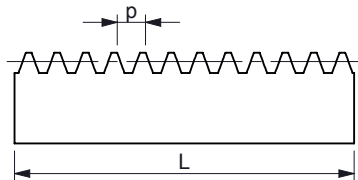
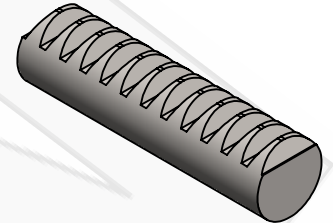
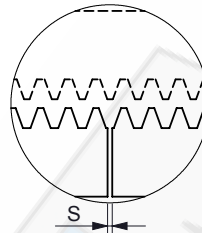


**TANDHEUGELS ROND MODUUL 1 - 5**  
**GEAR RACKS ROUND MODULE 1 - 5**  
**RUNDZAHNSTANGEN MODUL 1 - 5**  
**CRÉMAILLÈRES RONDE MODULE 1 - 5**

Recht gefreesd / drukhoek 20°  
 Straight toothed / 20° transverse pressure angle



Montage voorbeeld  
 Assembly example



K.T.N. Number	Module	L [mm]	z	p [mm]	S [mm]	D [mm]	Ho [mm]	q ca. [kg/pc.]
40H0100102000R	1 x 2000	2010,62	640	3,14	0,5	10	14,0	1,20
40H0150152000R	1,5 x 2000	2016,90	428	4,71	0,6	15	13,5	2,60
40H0200202000R	2 x 2000	2010,62	320	6,28	0,6	20	18,0	4,52
40H0250252000R	2,5 x 2000	2010,62	256	7,85	0,7	25	22,5	7,20
40H0300302000R	3 x 2000	2016,90	214	9,42	0,8	30	27,0	10,28
40H0400402000R	4 x 2000	2010,62	160	12,57	0,8	40	36,0	18,24
40H0500502000R	5 x 2000	2010,62	124	15,71	1,0	50	45,0	28,40

Ook leverbaar in klantspecifieke uitvoering  
 Also available with customized applications

Overige modules op aanvraag  
 Other modules on request