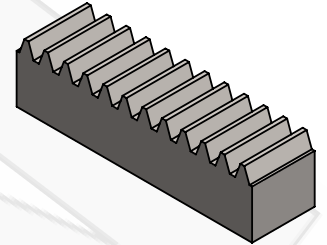
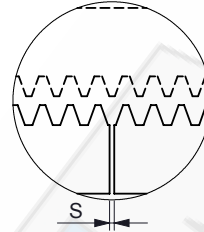
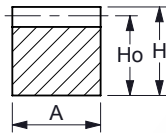
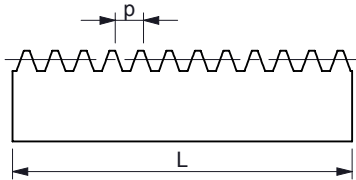


**TANDHEUGELS MODUUL 1 - 8**  
**GEAR RACKS MODULE 1 - 8**  
**ZAHNSTANGEN MODUL 1 - 8**  
**CRÉMAILLÈRES MODULE 1 - 8**

Recht gefreesd / drukhoek 20°  
 Straight toothed / 20° transverse pressure angle



Montage voorbeeld  
 Assembly example



K.T.N. Number	Module	L	z	p	S	A	H	Ho	q
		[mm]		[mm]	[mm]	[mm]	[mm]	[mm]	[kg/pc.]
40H0100150150500	1 x 500	499,51	159	3,14	0,5	15	15	14,0	0,82
40H0100150151000	1 x 1000	1002,17	319	3,14	0,5	15	15	14,0	1,50
40H0100150152000	1 x 2000	2001,20	637	3,14	0,5	15	15	14,0	3,10
40H0100150153000	1 x 3000	3000,23	955	3,14	0,5	15	15	14,0	4,90
40H0150170170500	1,5 x 500	499,51	106	4,71	0,6	17	17	15,5	1,00
40H0150170171000	1,5 x 1000	1003,74	213	4,71	0,6	17	17	15,5	2,00
40H0150170172000	1,5 x 2000	2002,77	425	4,71	0,6	17	17	15,5	4,00
40H0150170173000	1,5 x 3000	3001,80	637	4,71	0,6	17	17	15,5	6,10
40H0200200200500	2 x 500	502,66	80	6,28	0,6	20	20	18,0	1,40
40H0200200201000	2 x 1000	1005,31	160	6,28	0,6	20	20	18,0	2,70
40H0200200202000	2 x 2000	2004,34	319	6,28	0,6	20	20	18,0	5,40
40H0200200203000	2 x 3000	3003,37	478	6,28	0,6	20	20	18,0	8,40
40H0250250250500	2,5 x 500	502,66	64	7,85	0,7	25	25	22,5	2,10
40H0250250251000	2,5 x 1000	1005,31	128	7,85	0,7	25	25	22,5	4,30
40H0250250252000	2,5 x 2000	2002,77	255	7,85	0,7	25	25	22,5	8,60
40H0250250253000	2,5 x 3000	3000,23	382	7,85	0,7	25	25	22,5	11,90
40H0300300300500	3 x 500	499,51	53	9,42	0,8	30	30	27,0	3,10
40H0300300301000	3 x 1000	1008,45	107	9,42	0,8	30	30	27,0	6,30
40H0300300302000	3 x 2000	2007,48	213	9,42	0,8	30	30	27,0	12,50
40H0300300303000	3 x 3000	3006,51	319	9,42	0,8	30	30	27,0	18,60
40H0400400400500	4 x 500	502,66	40	12,57	0,8	40	40	36,0	5,50
40H0400400401000	4 x 1000	1005,31	80	12,57	0,8	40	40	36,0	11,10
40H0400400402000	4 x 2000	2010,62	160	12,57	0,8	40	40	36,0	22,00
40H0400400403000	4 x 3000	3003,37	239	12,57	0,8	40	40	36,0	31,30
40H0500500500500	5 x 500	502,66	32	15,71	1,0	50	50	45,0	8,30
40H0500500501000	5 x 1000	1005,31	64	15,71	1,0	50	50	45,0	17,50
40H0500500502000	5 x 2000	2010,62	128	15,71	1,0	50	50	45,0	34,60
40H0500500503000	5 x 3000	3000,23	191	15,71	1,0	50	50	45,0	45,30
40H0600600600500	6 x 500	508,94	27	18,85	1,0	60	60	54,0	12,65
40H0600600601000	6 x 1000	1017,88	54	18,85	1,0	60	60	54,0	25,00
40H0600600602000	6 x 2000	2016,91	107	18,85	1,0	60	60	54,0	51,00
40H0800800800500	8 x 500	502,66	20	25,13	1,0	80	80	72,0	22,40
40H0800800801000	8 x 1000	1005,31	40	25,13	1,0	80	80	72,0	45,00
40H0800800802000	8 x 2000	2010,62	80	25,13	1,0	80	80	72,0	90,00

Ook leverbaar in klantspecifieke uitvoering  
 Also available with customized applications

Overige modules op aanvraag  
 Other modules on request