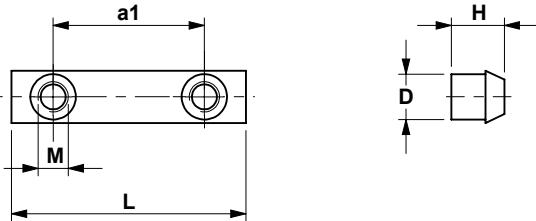
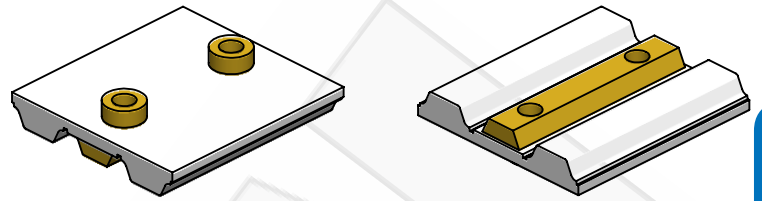
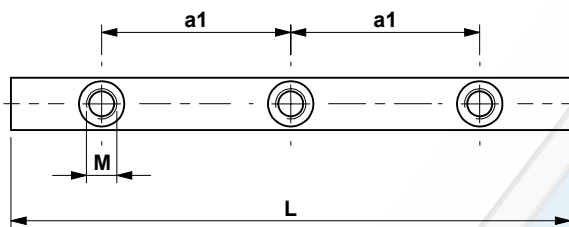


TANDRIEM INLEGTAND
TIMING BELT INSERTION RAIL
ZAHNRIEM EINLEGESCHIENE
COURROIE DENTÉE RAIL D'INSERTION

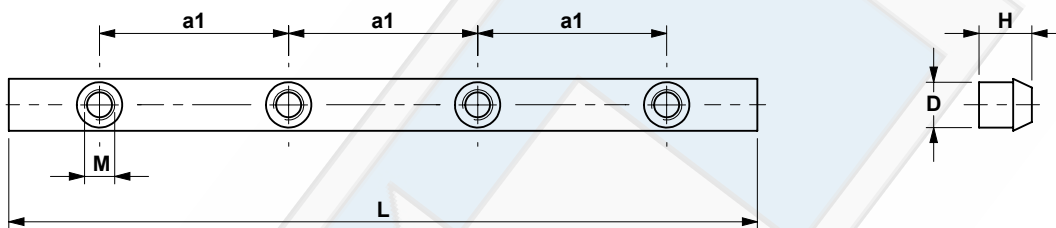
Voor tandriem uitvoering AT10
 For timing belt execution AT10



TYPE 2



TYPE 3



TYPE 4

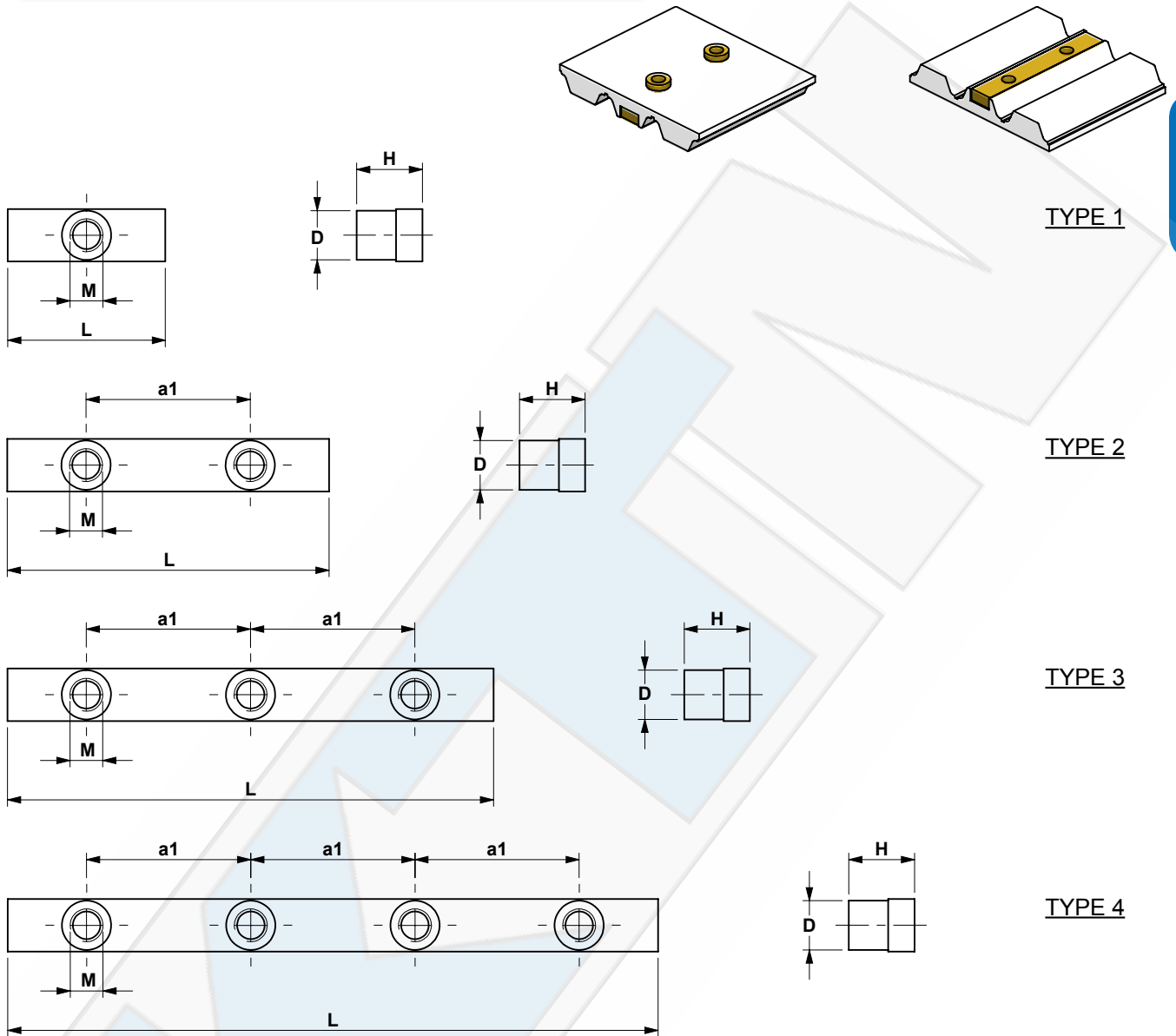
Materialen inlegspie messing, kunststof en RVS

Materials key brass, plastic and stainless steel

K.T.N. Number	Belt type	Belt width [mm]	L [mm]	D [mm]	H [mm]	a1 [mm]	M [mm]	Type
TAND025AT10	AT10	25	24,0	6,0	7	14	M4	2
TAND032AT10	AT10	32	31,0	6,0	7	20	M4	2
TAND050AT10	AT10	50	49,0	6,0	7	25	M4	2
TAND075AT10	AT10	75	74,0	6,0	7	25	M4	3
TAND100AT10	AT10	100	99,0	6,0	7	25	M4	4

TANDRIEM INLEGTAND
TIMING BELT INSERTION RAIL
ZAHNRIEM EINLEGESCHIENE
COURROIE DENTÉE RAIL D'INSERTION

Voor tandriem uitvoering AT20
 For timing belt execution AT20



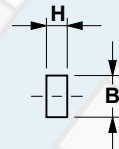
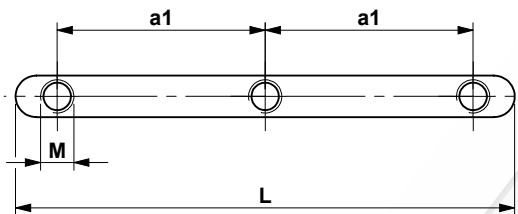
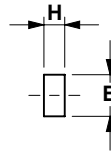
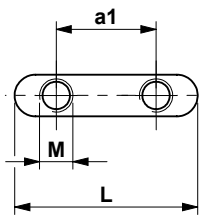
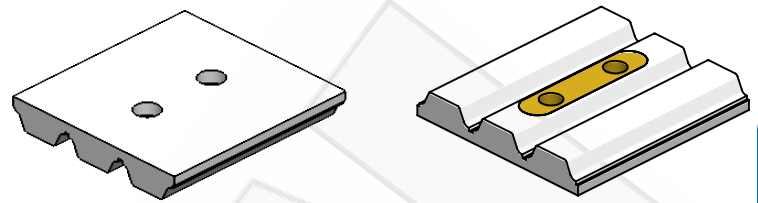
Materialen inlegspie messing, kunststof en RVS

Materials key brass, plastic and stainless steel

K.T.N. Number	Belt type	Belt width [mm]	L [mm]	D [mm]	H [mm]	a1 [mm]	M [mm]	Type
TAND025AT20	AT20	25	24,0	7,5	10	-	M4	1
TAND050AT20	AT20	50	49,0	7,5	10	25	M4	2
TAND075AT20	AT20	75	74,0	7,5	10	25	M4	3
TAND100AT20	AT20	100	99,0	7,5	10	25	M5	4

TANDRIEM INLEGSPIEËN
TIMING BELT KEYS
ZAHNRIEM PASSFEDERN
COURROIE DENTÉE CLAVETTES

Voor tandriem uitvoeringen AT10 en AT20
 For timing belt executions AT10 and AT20



TYPE 2

TYPE 3

Materialen inlegspie messing, kunststof en RVS

Materials key brass, plastic and stainless steel

K.T.N. Number	Belt type	Belt width [mm]	L [mm]	B [mm]	H [mm]	a1 [mm]	M [mm]	Type
SPIE012AT10	AT10	12	10	5	2,5	5	M4	2
SPIE025AT10	AT10	25	22	5	2,5	12	M4	2
SPIE032AT10	AT10	32	22	5	2,5	12	M4	2
SPIE050AT10	AT10	50	35	5	2,5	25	M4	2
SPIE075AT10	AT10	75	60	5	2,5	25	M4	3
SPIE050AT20	AT20	50	45	8	5,0	25	M6	2

Overige spie lengtes op aanvraag
 Other key lengths on request