

**TANDRIEMEN HTD 3M**  
**TIMING BELTS HTD 3M**  
**ZAHNRIEMEN HTD 3M**  
**COURROIES DENTÉES HTD 3M**

Metrische steek 3 mm  
 Metric pitch 3 mm

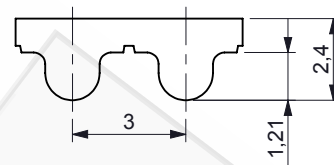


Leverbaar met / in:

Materiaal Rubber (standaard)  
 Materiaal PU (eindige lengtes)  
 Stalen (S) inlage

Available with / in:

Material Rubber (standard)  
 Material PU (open ended)  
 Steel (S) inlay



**Technische data HTD 3M / Technical data HTD 3M**

Vermogenoverbrenging Maximaal toerental Maximum snelheid Tandtalpoelie	Power transmission Maximum rpm Top speed Number of teeth	≤ 3,5 Kw ca. 10,000 min <sup>-1</sup> ca. 50 ms <sup>-1</sup> min. z=10
Breukbelasting per 25 mm tandbreedte	Breaking load per 25 mm tooth width	Staal / Steel (S) 3500 N / 25 mm Kevlar / Kevlar (K) N / A
Max. tandriembelasting per 25 mm tandbreedte (veiligheidsfactor > 4) Staal en Kevlar	Max. timing belt load per 25 mm tooth width (safety factor > 4) Steel and Kevlar	Eindig / Open ended (S) 900 N / 25 mm Gelast / Welded (S) (PU) 450 N / 25 mm
Specifiek tandriem gewicht bij riembreedte 25 mm	Specific timing belt weight for belt width 25 mm	Staal / Steel (ca.) 0,06 kg / m Kevlar / Kevlar (ca.) N / A

**Wikkellengtes / Sleeve lengths ---- Breedtematen / Width sizes 6 / 9 / 15 [mm]**

K.T.N. Number	Length [mm]	K.T.N. Number	Length [mm]	K.T.N. Number	Length [mm]	K.T.N. Number	Length [mm]	K.T.N. Number	Length [mm]	K.T.N. Number	Length [mm]	K.T.N. Number	Length [mm]
HTD 3M	105	HTD 3M	186	HTD 3M	264	HTD 3M	345	HTD 3M	489	HTD 3M	606	HTD 3M	960
HTD 3M	111	HTD 3M	192	HTD 3M	267	HTD 3M	357	HTD 3M	495	HTD 3M	612	HTD 3M	1041
HTD 3M	117	HTD 3M	195	HTD 3M	270	HTD 3M	363	HTD 3M	501	HTD 3M	615	HTD 3M	1062
HTD 3M	120	HTD 3M	201	HTD 3M	276	HTD 3M	366	HTD 3M	510	HTD 3M	633	HTD 3M	1068
HTD 3M	123	HTD 3M	204	HTD 3M	282	HTD 3M	375	HTD 3M	513	HTD 3M	648	HTD 3M	1071
HTD 3M	126	HTD 3M	207	HTD 3M	285	HTD 3M	384	HTD 3M	519	HTD 3M	669	HTD 3M	1125
HTD 3M	129	HTD 3M	210	HTD 3M	288	HTD 3M	390	HTD 3M	522	HTD 3M	672	HTD 3M	1176
HTD 3M	141	HTD 3M	213	HTD 3M	291	HTD 3M	393	HTD 3M	525	HTD 3M	675	HTD 3M	1245
HTD 3M	144	HTD 3M	216	HTD 3M	294	HTD 3M	405	HTD 3M	531	HTD 3M	708	HTD 3M	1263
HTD 3M	147	HTD 3M	219	HTD 3M	297	HTD 3M	411	HTD 3M	537	HTD 3M	711	HTD 3M	1500
HTD 3M	150	HTD 3M	225	HTD 3M	300	HTD 3M	420	HTD 3M	558	HTD 3M	735	HTD 3M	1530
HTD 3M	156	HTD 3M	231	HTD 3M	306	HTD 3M	426	HTD 3M	564	HTD 3M	738	HTD 3M	1569
HTD 3M	159	HTD 3M	237	HTD 3M	312	HTD 3M	432	HTD 3M	570	HTD 3M	753	HTD 3M	1587
HTD 3M	165	HTD 3M	240	HTD 3M	315	HTD 3M	435	HTD 3M	576	HTD 3M	756	HTD 3M	1692
HTD 3M	168	HTD 3M	243	HTD 3M	318	HTD 3M	447	HTD 3M	579	HTD 3M	804	HTD 3M	1863
HTD 3M	171	HTD 3M	246	HTD 3M	327	HTD 3M	462	HTD 3M	582	HTD 3M	816		
HTD 3M	174	HTD 3M	249	HTD 3M	330	HTD 3M	474	HTD 3M	591	HTD 3M	843		
HTD 3M	177	HTD 3M	252	HTD 3M	333	HTD 3M	477	HTD 3M	594	HTD 3M	882		
HTD 3M	180	HTD 3M	255	HTD 3M	336	HTD 3M	480	HTD 3M	597	HTD 3M	888		
HTD 3M	183	HTD 3M	261	HTD 3M	339	HTD 3M	486	HTD 3M	600	HTD 3M	945		

Overige breedtematen op aanvraag  
 Other belt widths on request

Overige lengtematen op aanvraag  
 Other belt lengths on request

**TANDRIEMEN HTD 5M / 5M-DL**  
**TIMING BELTS HTD 5M / 5M-DL**  
**ZAHNRIEMEN HTD 5M / 5M-DL**  
**COURROIES DENTÉES HTD 5M / 5M-DL**

Metrische steek 5 mm  
 Metric pitch 5 mm

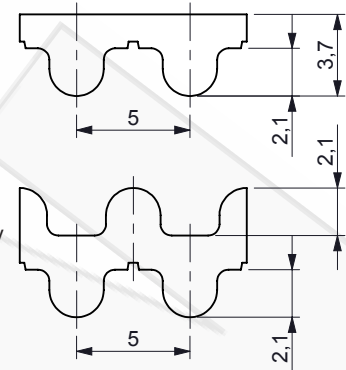


Leverbaar met / in:

- Materiaal Rubber (standaard)
- Materiaal PU (eindige lengtes)
- Staal (S) / Kevlar (K) / RVS inlage (SS)
- Dubbelzijdige uitvoering
- Optioneel versterkte uitvoering (\*)
- Aleen leverbaar in versterkte uitvoering (\*\*)

Available with / in:

- Material Rubber (standard)
- Material PU (open ended)
- Steel (S) / Kevlar (K) / Stainless steel (SS) inlay
- Double sided execution
- Optional strengthened execution (\*)
- Only available in strengthened execution (\*\*)



Technische data HTD 5M / Technical data HTD 5M			
Vermogensoverbrenging	Power transmission	≤ 12 kW	
Maximaal toerental	Maximum rpm	ca. 10,000 min-1	
Maximum snelheid	Top speed	ca. 50 ms-1	
Tandtalpoelie	Number of teeth	min. z=12	
Breukbelasting per 25 mm tandbreedte	Breaking load per 25 mm tooth width	Staal / Steel (S)	10235 N / 25 mm
		Kevlar / Kevlar (K)	8900 N / 25 mm
Max. tandriembelasting per 25 mm tandbreedte (veiligheidsfactor > 4)	Max. timing belt load per 25 mm tooth width (safety factor > 4)	Eindig / Open ended (S)	1840 N / 25 mm
		Gelast / Welded (S) (PU)	920 N / 25 mm
Staal en Kevlar	Steel and Kevlar	Eindig / Open ended (K)	1064 N / 25 mm
		Gelast / Welded (K) (PU)	798 N / 25 mm
Specifiek tandriem gewicht bij riembreedte 25 mm	Specific timing belt weight for belt width 25 mm	Staal / Steel (ca.)	0,12 kg / m
		Kevlar / Kevlar (ca.)	0,11 kg / m

**Wikkellengtes / Sleeve lengths ---- Breedtematen / Width sizes 9 / 15 / 25 [mm]**

K.T.N. Number	Length [mm]	K.T.N. Number	Length [mm]	K.T.N. Number	Length [mm]	K.T.N. Number	Length [mm]	K.T.N. Number	Length [mm]	K.T.N. Number	Length [mm]	K.T.N. Number	Length [mm]
HTD 5M	120	HTD 5M	350*	HTD 5M	525*	HTD 5M	655	HTD 5M	830	HTD 5M	985	HTD 5M	1595*
HTD 5M	180	HTD 5M	360	HTD 5M	535*	HTD 5M	665*	HTD 5M	835*	HTD 5M	1000*	HTD 5M	1605
HTD 5M	225*	HTD 5M	365	HTD 5M	540	HTD 5M	670*	HTD 5M	840**	HTD 5M	1025	HTD 5M	1690*
HTD 5M	235	HTD 5M	370	HTD 5M	550*	HTD 5M	675*	HTD 5M	845	HTD 5M	1035	HTD 5M	1790*
HTD 5M	245	HTD 5M	375*	HTD 5M	560	HTD 5M	700*	HTD 5M	850*	HTD 5M	1050*	HTD 5M	1800*
HTD 5M	255	HTD 5M	385	HTD 5M	565*	HTD 5M	705	HTD 5M	860*	HTD 5M	1100	HTD 5M	1870
HTD 5M	265*	HTD 5M	400*	HTD 5M	575	HTD 5M	710*	HTD 5M	870	HTD 5M	1125*	HTD 5M	1895
HTD 5M	270	HTD 5M	415	HTD 5M	580	HTD 5M	720	HTD 5M	890*	HTD 5M	1135	HTD 5M	1910
HTD 5M	275*	HTD 5M	420	HTD 5M	600*	HTD 5M	725	HTD 5M	900*	HTD 5M	1195	HTD 5M	1945
HTD 5M	280*	HTD 5M	425*	HTD 5M	610	HTD 5M	740*	HTD 5M	920	HTD 5M	1200*	HTD 5M	2000*
HTD 5M	285	HTD 5M	450*	HTD 5M	615*	HTD 5M	745	HTD 5M	925*	HTD 5M	1240	HTD 5M	2110
HTD 5M	295*	HTD 5M	455	HTD 5M	620*	HTD 5M	750*	HTD 5M	935	HTD 5M	1270*	HTD 5M	2250
HTD 5M	300*	HTD 5M	460*	HTD 5M	625	HTD 5M	755*	HTD 5M	940	HTD 5M	1350	HTD 5M	2350
HTD 5M	305	HTD 5M	465	HTD 5M	630*	HTD 5M	775	HTD 5M	950*	HTD 5M	1380	HTD 5M	2525
HTD 5M	325*	HTD 5M	475*	HTD 5M	635*	HTD 5M	790	HTD 5M	960	HTD 5M	1400		
HTD 5M	330*	HTD 5M	490	HTD 5M	640*	HTD 5M	800*	HTD 5M	965	HTD 5M	1420		
HTD 5M	340	HTD 5M	500*	HTD 5M	645	HTD 5M	810	HTD 5M	975	HTD 5M	1425		
HTD 5M	345	HTD 5M	520	HTD 5M	650	HTD 5M	825	HTD 5M	980	HTD 5M	1500*		

Overige breedtematen op aanvraag  
 Other belt widths on request

Overige lengtematen op aanvraag  
 Other belt lengths on request

**TANDRIEMEN HTD 8M / 8M-DL**  
**TIMING BELTS HTD 8M / 8M-DL**  
**ZAHNRIEMEN HTD 8M / 8M-DL**  
**COURROIES DENTÉES HTD 8M / 8M-DL**

Metrische steek 8 mm  
 Metric pitch 8 mm

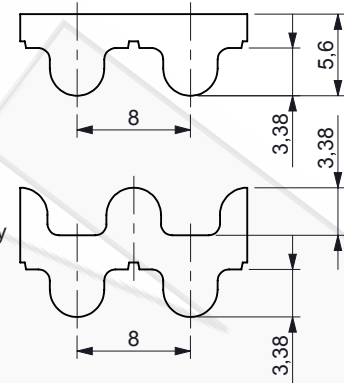


Leverbaar met / in:

Materiaal Rubber (standaard)  
 Materiaal PU (eindige lengtes)  
 Staal (S) / Kevlar (K) / RVS inlage (SS)  
 Dubbelzijdige uitvoering  
 Optioneel versterkte uitvoering (\*)

Available with / in:

Material Rubber (standard)  
 Material PU (open ended)  
 Steel (S) / Kevlar (K) / Stainless steel (SS) inlay  
 Double sided execution  
 Optional strengthened execution (\*)



**Technische data HTD 8M / Technical data HTD 8M**

Vermogenoverbrenging Maximaal toerental Maximum snelheid Tandtalpoelie	Power transmission Maximum rpm Top speed Number of teeth	≤ 120 kW ca. 6.500 min <sup>-1</sup> ca. 50 ms <sup>-1</sup> min. z=20
Breakbelasting per 25 mm tandbreedte	Breaking load per 25 mm tooth width	Staal / Steel (S) 13435 N / 25 mm Kevlar / Kevlar (K) 16010 N / 25 mm
Max. tandriembelasting per 25 mm tandbreedte (veiligheidsfactor > 4) Staal en Kevlar	Max. timing belt load per 25 mm tooth width (safety factor > 4) Steel and Kevlar	Eindig / Open ended (S) 3840 N / 25 mm Gelast / Welded (S) (PU) 1920 N / 25 mm Eindig / Open ended (K) 1750 N / 25 mm Gelast / Welded (K) (PU) 1313 N / 25 mm
Specifiek tandriem gewicht bij riembreedte 25 mm	Specific timing belt weight for belt width 25 mm	Staal / Steel (ca.) 0,18 kg / m Kevlar / Kevlar (ca.) 0,13 kg / m

**Wikkellengtes / Sleeve lengths ---- Breedtematen / Width sizes 20 / 30 / 50 / 85 [mm]**

K.T.N. Number	Length [mm]	K.T.N. Number	Length [mm]	K.T.N. Number	Length [mm]	K.T.N. Number	Length [mm]	K.T.N. Number	Length [mm]	K.T.N. Number	Length [mm]	K.T.N. Number	Length [mm]
HTD 8M	288*	HTD 8M	576	HTD 8M	792	HTD 8M	1056	HTD 8M	1264	HTD 8M	1520	HTD 8M	2240
HTD 8M	320*	HTD 8M	584	HTD 8M	800*	HTD 8M	1064	HTD 8M	1280*	HTD 8M	1552	HTD 8M	2248*
HTD 8M	352*	HTD 8M	600*	HTD 8M	824	HTD 8M	1080*	HTD 8M	1296	HTD 8M	1584	HTD 8M	2272
HTD 8M	360*	HTD 8M	608*	HTD 8M	840*	HTD 8M	1096	HTD 8M	1304*	HTD 8M	1600*	HTD 8M	2400*
HTD 8M	376	HTD 8M	624	HTD 8M	848	HTD 8M	1120*	HTD 8M	1320	HTD 8M	1680*	HTD 8M	2504
HTD 8M	384*	HTD 8M	632*	HTD 8M	856	HTD 8M	1128	HTD 8M	1328*	HTD 8M	1696	HTD 8M	2520*
HTD 8M	408*	HTD 8M	640*	HTD 8M	880*	HTD 8M	1152	HTD 8M	1344	HTD 8M	1728	HTD 8M	2600*
HTD 8M	416*	HTD 8M	656*	HTD 8M	896*	HTD 8M	1160	HTD 8M	1352*	HTD 8M	1760*	HTD 8M	2800*
HTD 8M	424*	HTD 8M	672	HTD 8M	912*	HTD 8M	1168	HTD 8M	1360*	HTD 8M	1800*	HTD 8M	3048*
HTD 8M	456*	HTD 8M	680*	HTD 8M	920*	HTD 8M	1184	HTD 8M	1392	HTD 8M	1896	HTD 8M	3280*
HTD 8M	480*	HTD 8M	712	HTD 8M	936	HTD 8M	1192	HTD 8M	1400	HTD 8M	1904*	HTD 8M	3600*
HTD 8M	512	HTD 8M	720*	HTD 8M	960*	HTD 8M	1200*	HTD 8M	1424*	HTD 8M	1936	HTD 8M	4400*
HTD 8M	520	HTD 8M	744	HTD 8M	968	HTD 8M	1216	HTD 8M	1432*	HTD 8M	2000*		
HTD 8M	536*	HTD 8M	760*	HTD 8M	976	HTD 8M	1224*	HTD 8M	1440*	HTD 8M	2080		
HTD 8M	544*	HTD 8M	776*	HTD 8M	1000*	HTD 8M	1248	HTD 8M	1464*	HTD 8M	2104		
HTD 8M	560*	HTD 8M	784*	HTD 8M	1040*	HTD 8M	1256	HTD 8M	1480	HTD 8M	2200*		

Overige breedtematen op aanvraag  
 Other belt widths on request

Overige lengtematen op aanvraag  
 Other belt lengths on request

**TANDRIEMEN HTD 14M / 14M-DL**  
**TIMING BELTS HTD 14M / 14M-DL**  
**ZAHNRIEMEN HTD 14M / 14M-DL**  
**COURROIES DENTÉES HTD 14M / 14M-DL**

Metrische steek 14 mm  
 Metric pitch 14 mm

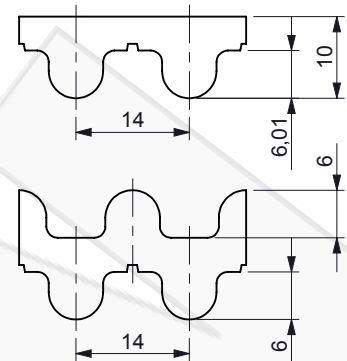


Leverbaar met / in:

Materiaal Rubber (standaard)  
 Materiaal PU (eindige lengtes)  
 Staal (S) / Kevlar (K) / RVS inlage (SS)  
 Dubbelzijdige uitvoering  
 Optioneel versterkte uitvoering (\*)

Available with / in:

Material Rubber (standard)  
 Material PU (open ended)  
 Steel (S) / Kevlar (K) / Stainless steel (SS) inlay  
 Double sided execution  
 Optional strengthened execution (\*)



11

**Technische data HTD 14M / Technical data HTD 14M**

Vermogenoverbrenging Maximaal toerental Maximum snelheid Tandtalpoelie	Power transmission Maximum rpm Top speed Number of teeth	≤ 300 kW ca. 14.000 min-1 ca. 50 ms-1 min. z=28
Breukbelasting per 25 mm tandbreedte	Breaking load per 25 mm tooth width	Staal / Steel (S) 19890 N / 25 mm Kevlar / Kevlar (K) 17925 N / 25 mm
Max. tandriembelasting per 25 mm tandbreedte (veiligheidsfactor > 4) Staal en Kevlar	Max. timing belt load per 25 mm tooth width (safety factor > 4) Steel and Kevlar	Eindig / Open ended (S) 6600 N / 25 mm Gelast / Welded (S) (PU) 3300 N / 25 mm Eindig / Open ended (K) 1515 N / 25 mm Gelast / Welded (K) (PU) 1136 N / 25 mm
Specifiek tandriem gewicht bij riembreedte 25 mm	Specific timing belt weight for belt width 25 mm	Staal / Steel (ca.) 0,28 kg / m Kevlar / Kevlar (ca.) 0,22 kg / m

**Wikkellengtes / Sleeve lengths ----- Breedtematen / Width sizes 40 / 55 / 85 / 115 / 170 [mm]**

K.T.N. Number	Length [mm]	K.T.N. Number	Length [mm]	K.T.N. Number	Length [mm]	K.T.N. Number	Length [mm]	K.T.N. Number	Length [mm]	K.T.N. Number	Length [mm]
HTD 14M	966*	HTD 14M	1288*	HTD 14M	1540	HTD 14M	1848*	HTD 14M	2310*	HTD 14M	2968*
HTD 14M	994*	HTD 14M	1344*	HTD 14M	1568*	HTD 14M	1890*	HTD 14M	2380*	HTD 14M	3150*
HTD 14M	1092*	HTD 14M	1400*	HTD 14M	1610*	HTD 14M	1904*	HTD 14M	2450*	HTD 14M	3360*
HTD 14M	1106*	HTD 14M	1442*	HTD 14M	1680	HTD 14M	1960*	HTD 14M	2590*	HTD 14M	3500*
HTD 14M	1190*	HTD 14M	1456	HTD 14M	1764*	HTD 14M	2100*	HTD 14M	2660*	HTD 14M	3850*
HTD 14M	1260*	HTD 14M	1512	HTD 14M	1778*	HTD 14M	2240*	HTD 14M	2800*	HTD 14M	3920*

Overige breedtematen op aanvraag  
 Other belt widths on request

Overige lengtematen op aanvraag  
 Other belt lengths on request