

TANDRIEMEN AT5 / AT5-DL
TIMING BELTS AT5 / AT5-DL
ZAHNRIEMEN AT5 / AT5-DL
COURROIES DENTÉES AT5 / AT5-DL

Metrische steek 5 mm
 Metric pitch 5 mm

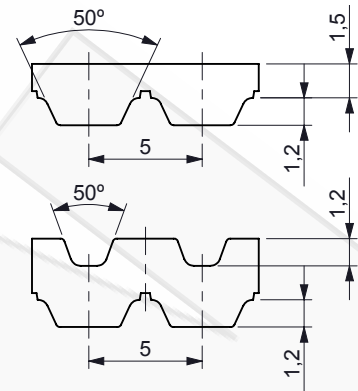


Leverbaar met / in:

Materiaal PU (standaard)
 Staal (S) / Kevlar (K) / RVS inlage (SS)
 Speciale bekleding op aanvraag
 Gelaste nokken op rugzijde
 Tand- en/of rugzijde nylon bekleedt
 Tand voorzien van schroefverbinding
 Dubbelzijdige uitvoering

Available with / in:

Material PU (standard)
 Steel (S) / Kevlar (K) / Stainless steel (SS) inlay
 Specific surfaces on request
 Welded-on profiles on back side
 Tooth and/or backside nylon covered
 Tooth available with screwed joint
 Double sided execution



Technische data AT5 (PU) / Technical data AT5 (PU)			
Vermogensoverbrenging	Power transmission	≤ 15 Kw	
Maximaal toerental	Maximum rpm	ca. 10,000 min-1	
Maximum snelheid	Top speed	ca. 80 ms-1	
Tandtalpoelie	Number of teeth	min. z=15	
Breukbelasting per 25 mm tandbreedte	Breaking load per 25 mm tooth width	Staal / Steel (S)	6450 N / 25 mm
		Kevlar / Kevlar (K)	8095 N / 25 mm
Max. tandriembelasting per 25 mm tandbreedte (veiligheidsfactor > 4)	Max. timing belt load per 25 mm tooth width (safety factor > 4)	Eindig / Open ended (S)	1840 N / 25 mm
		Gelast / Welded (S)	920 N / 25 mm
		Eindig / Open ended (K)	1210 N / 25 mm
		Gelast / Welded (K)	908 N / 25 mm
Specifiek tandriem gewicht bij riembreedte 25 mm	Specific timing belt weight for belt width 25 mm	Staal / Steel (ca.)	0,09 kg / m
		Kevlar / Kevlar (ca.)	0,09 kg / m

Wikkellengtes / Sleeve lengths ---- Breedtematen / Width sizes 6 / 10 / 16 / 20 / 25 [mm]													
K.T.N. Number	Length [mm]	K.T.N. Number	Length [mm]	K.T.N. Number	Length [mm]	K.T.N. Number	Length [mm]	K.T.N. Number	Length [mm]	K.T.N. Number	Length [mm]	K.T.N. Number	Length [mm]
AT5	225	AT5	450	AT5	670	AT5	975	AT5	1600	AT5	2800	AT5	5300
AT5	255	AT5	455	AT5	710	AT5	990	AT5	1700	AT5	3000	AT5	5600
AT5	260	AT5	480	AT5	720	AT5	1020	AT5	1750	AT5	3150	AT5	6000
AT5	280	AT5	500	AT5	750	AT5	1050	AT5	1800	AT5	3350	AT5	6300
AT5	300	AT5	525	AT5	780	AT5	1075	AT5	1900	AT5	3550	AT5	6700
AT5	305	AT5	545	AT5	825	AT5	1100	AT5	2000	AT5	3750	AT5	7100
AT5	330	AT5	600	AT5	840	AT5	1125	AT5	2120	AT5	4000	AT5	7500
AT5	340	AT5	610	AT5	855	AT5	1215	AT5	2240	AT5	4250		
AT5	375	AT5	620	AT5	860	AT5	1230	AT5	2360	AT5	4500		
AT5	390	AT5	630	AT5	900	AT5	1380	AT5	2500	AT5	4750		
AT5	420	AT5	660	AT5	920	AT5	1500	AT5	2650	AT5	5000		

Overige breedtematen op aanvraag
 Other belt widths on request

Overige lengtematen op aanvraag
 Other belt lengths on request

TANDRIEMEN AT10 / AT10-DL
TIMING BELTS AT10 / AT10-DL
ZAHNRIEMEN AT10 / AT10-DL
COURROIES DENTÉES AT10 / AT10-DL



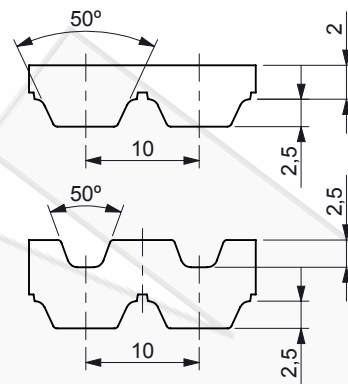
Metrische steek 10 mm
 Metric pitch 10 mm

Leverbaar met / in:

- Materiaal PU (standaard)
- Staal (S) / Kevlar (K) / RVS inlage (SS)
- Speciale bekleding op aanvraag
- Gelaste nokken op rugzijde
- Tand- en/of rugzijde nylon bekleedt
- Tand voorzien van schroefverbinding
- Dubbelzijdige uitvoering

Available with / in:

- Material PU (standard)
- Steel (S) / Kevlar (K) / Stainless steel (SS) inlay
- Specific surfaces on request
- Welded-on profiles on back side
- Tooth and/or backside nylon covered
- Tooth available with screwed joint
- Double sided execution



Technische data AT10 (PU) / Technical data AT10 (PU)

Vermogensoverbrenging	Power transmission	≤ 70 kW	
Maximaal toerental	Maximum rpm	ca. 10.000 min-1	
Maximum snelheid	Top speed	ca. 60 ms-1	
Tandtalpoelie	Number of teeth	min. z=15	
Breukbelasting per 25 mm tandbreedte	Breaking load per 25 mm tooth width	Staal / Steel (S)	13435 N / 25 mm
		Kevlar / Kevlar (K)	16010 N / 25 mm
Max. tandriembelasting per 25 mm tandbreedte (veiligheidsfactor > 4) Staal en Kevlar	Max. timing belt load per 25 mm tooth width (safety factor > 4) Steel and Kevlar	Eindig / Open ended (S)	3840 N / 25 mm
		Gelast / Welded (S)	1920 N / 25 mm
		Eindig / Open ended (K)	1750 N / 25 mm
		Gelast / Welded (K)	1313 N / 25 mm
Specifiek tandriem gewicht bij riembreedte 25 mm	Specific timing belt weight for belt width 25 mm	Staal / Steel (ca.)	0,15 kg / m
		Kevlar / Kevlar (ca.)	0,14 kg / m

Wikkellengtes / Sleeve lengths ---- Breedtematen / Width sizes 12 / 16 / 20 / 25 / 32 / 50 [mm]

K.T.N. Number	Length [mm]	K.T.N. Number	Length [mm]	K.T.N. Number	Length [mm]	K.T.N. Number	Length [mm]	K.T.N. Number	Length [mm]	K.T.N. Number	Length [mm]	K.T.N. Number	Length [mm]
AT 10	400	AT 10	730	AT 10	1000	AT 10	1300	AT 10	1800	AT 10	3000	AT 10	6000
AT 10	500	AT 10	780	AT 10	1010	AT 10	1320	AT 10	1860	AT 10	3150	AT 10	6300
AT 10	530	AT 10	800	AT 10	1050	AT 10	1350	AT 10	1900	AT 10	3350	AT 10	6700
AT 10	560	AT 10	810	AT 10	1080	AT 10	1360	AT 10	1940	AT 10	3750	AT 10	7100
AT 10	580	AT 10	840	AT 10	1100	AT 10	1400	AT 10	2000	AT 10	4000	AT 10	7500
AT 10	600	AT 10	880	AT 10	1150	AT 10	1420	AT 10	2120	AT 10	4250	AT 10	8000
AT 10	610	AT 10	890	AT 10	1200	AT 10	1480	AT 10	2240	AT 10	4500	AT 10	9000
AT 10	630	AT 10	920	AT 10	1210	AT 10	1500	AT 10	2360	AT 10	4750		
AT 10	660	AT 10	960	AT 10	1240	AT 10	1600	AT 10	2500	AT 10	5000		
AT 10	700	AT 10	970	AT 10	1250	AT 10	1700	AT 10	2650	AT 10	5300		
AT 10	720	AT 10	980	AT 10	1280	AT 10	1720	AT 10	2800	AT 10	5600		

Overige breedtematen op aanvraag
 Other belt widths on request

Overige lengtematen op aanvraag
 Other belt lengths on request

TANDRIEMEN AT20 / AT20-DL
TIMING BELTS AT20 / AT20-DL
ZAHNRIEMEN AT20 / AT20-DL
COURROIES DENTÉES AT20 / AT20-DL

Metrische steek 20 mm
 Metric pitch 20 mm

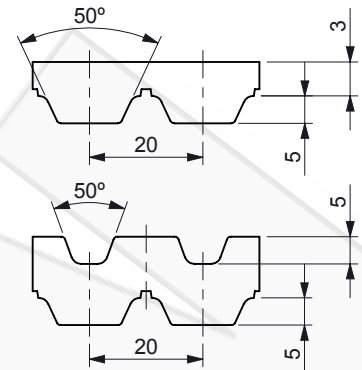


Leverbaar met / in:

Materiaal PU (standaard)
 Staal (S) / Kevlar (K) / RVS inlage (SS)
 Speciale bekleding op aanvraag
 Gelaste nokken op rugzijde
 Tand- en/of rugzijde nylon bekleedt
 Tand voorzien van schroefverbinding
 Dubbelzijdige uitvoering

Available with / in:

Material PU (standard)
 Steel (S) / Kevlar (K) / Stainless steel (SS) inlay
 Specific surfaces on request
 Welded-on profiles on back side
 Tooth and/or backside nylon covered
 Tooth available with screwed joint
 Double sided execution



11

Technische data AT20 (PU) / Technical data AT20 (PU)

Vermogenoverbrenging	Power transmission	≤ 200 kW
Maximaal toerental	Maximum rpm	ca. 6.500 min-1
Maximum snelheid	Top speed	ca. 40 ms-1
Tandtal/poelie	Number of teeth	min. z=18
Breukbelasting per 25 mm tandbreedte	Breaking load per 25 mm tooth width	Staal / Steel (S) 22955 N / 25 mm Kevlar / Kevlar (K) 20683 N / 25 mm
Max. tandriembelasting per 25 mm tandbreedte (veiligheidsfactor > 4) Staal en Kevlar	Max. timing belt load per 25 mm tooth width (safety factor > 4) Steel and Kevlar	Eindig / Open ended (S) 6600 N / 25 mm Gelast / Welded (S) 3300 N / 25 mm Eindig / Open ended (K) 1750 N / 25 mm Gelast / Welded (K) 1313 N / 25 mm
Specifiek tandriem gewicht bij riembreedte 25 mm	Specific timing belt weight for belt width 25 mm	Staal / Steel (ca.) 0,24 kg / m Kevlar / Kevlar (ca.) 0,19 kg / m

Wikkellengtes / Sleeve lengths ---- Breedtematen / Width sizes 32 / 50 / 75 / 100 [mm]

K.T.N. Number	Length [mm]	K.T.N. Number	Length [mm]	K.T.N. Number	Length [mm]	K.T.N. Number	Length [mm]	K.T.N. Number	Length [mm]	K.T.N. Number	Length [mm]	K.T.N. Number	Length [mm]
AT 20	1000	AT 20	1700	AT 20	2120	AT 20	3000	AT 20	4260	AT 20	6000	AT 20	8500
AT 20	1100	AT 20	1760	AT 20	2240	AT 20	3160	AT 20	4500	AT 20	6300	AT 20	9000
AT 20	1200	AT 20	1800	AT 20	2360	AT 20	3360	AT 20	4760	AT 20	6700		
AT 20	1260	AT 20	1900	AT 20	2500	AT 20	3560	AT 20	5000	AT 20	7100		
AT 20	1500	AT 20	1960	AT 20	2660	AT 20	3760	AT 20	5300	AT 20	7500		
AT 20	1600	AT 20	2000	AT 20	2800	AT 20	4000	AT 20	5600	AT 20	8000		

Overige breedtematen op aanvraag
 Other belt widths on request

Overige lengtematen op aanvraag
 Other belt lengths on request